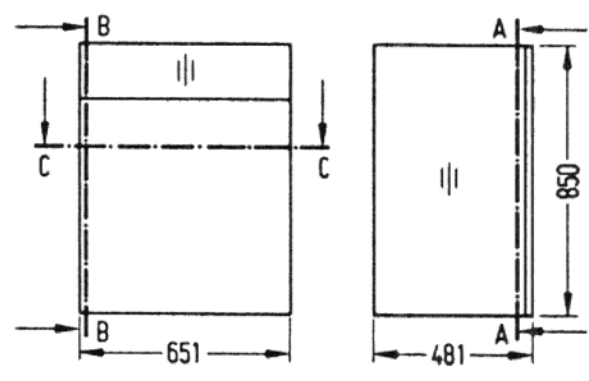
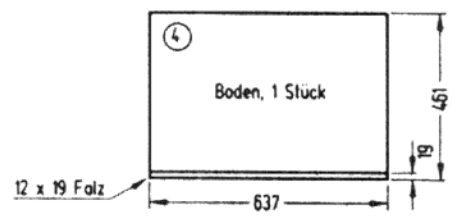
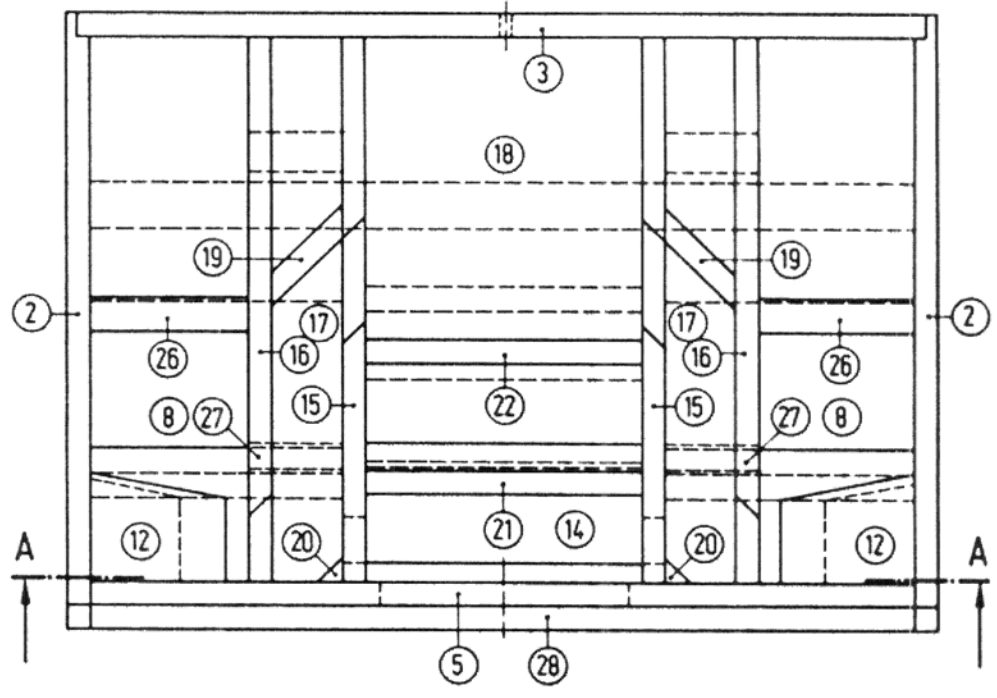
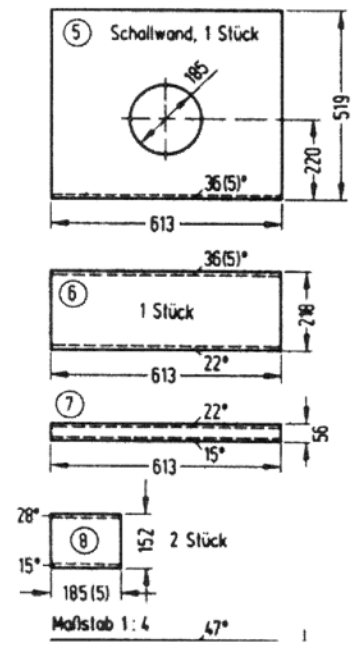
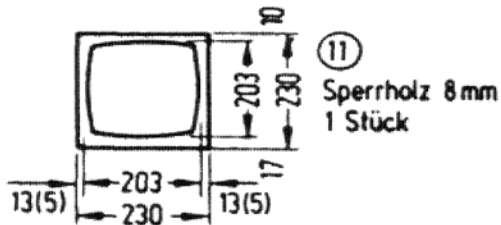
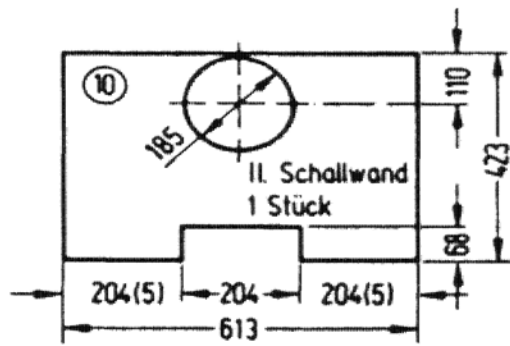


Schnitt C-C

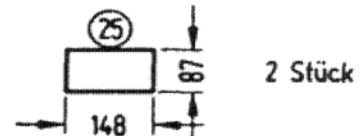
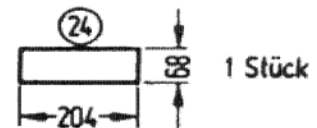
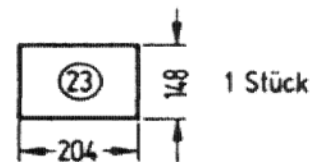
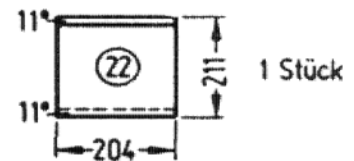
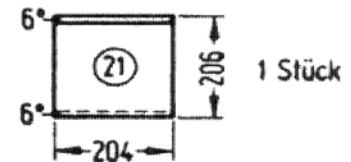
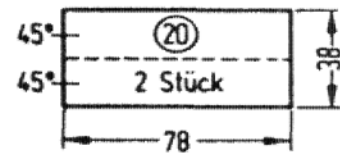
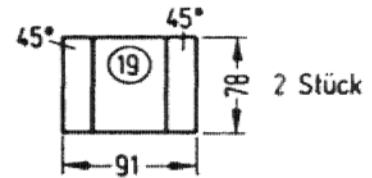
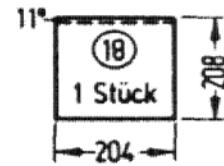
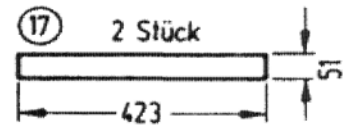
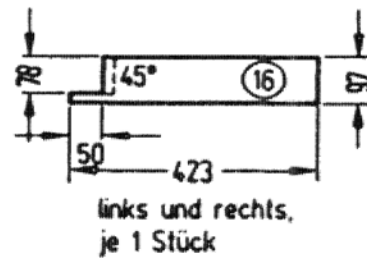
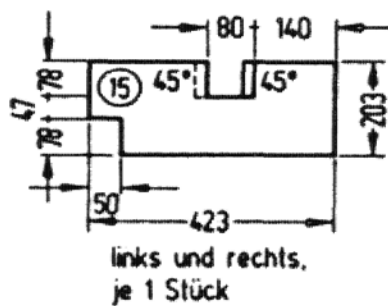
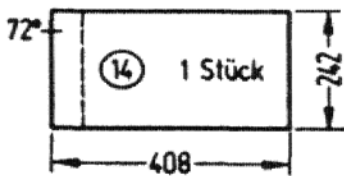
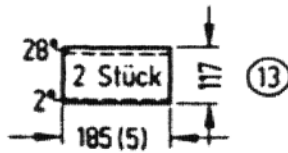
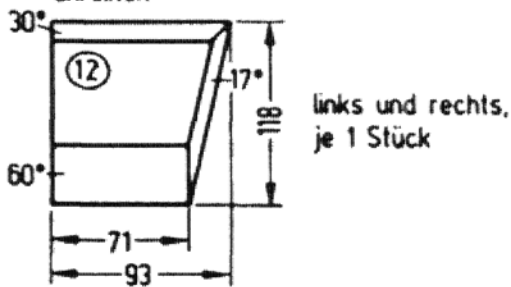


zu Abb. 182





Rundungen bei 11 von LOWTHER-Körben anreißen



zu Abb. 53

zu Abb. 182



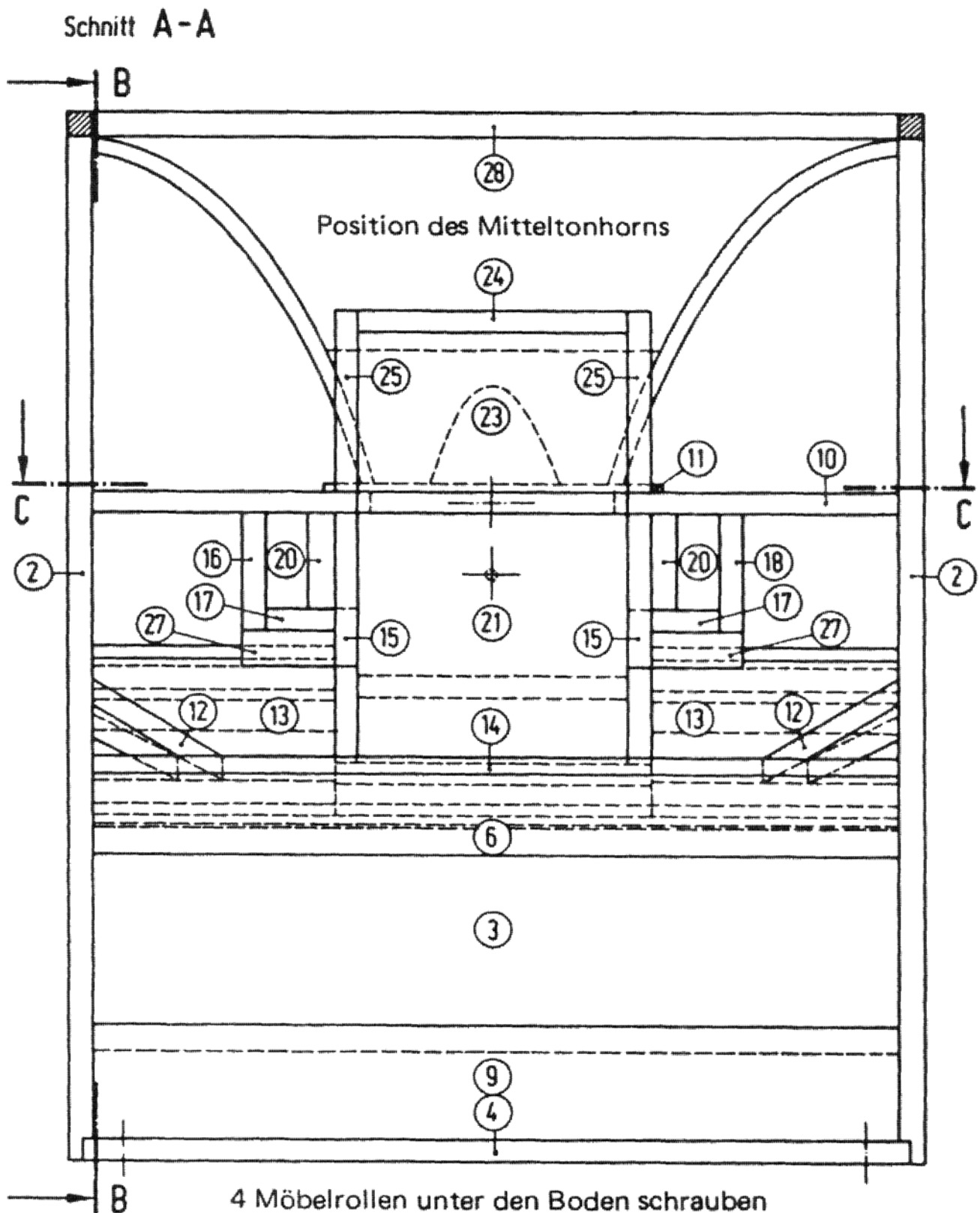
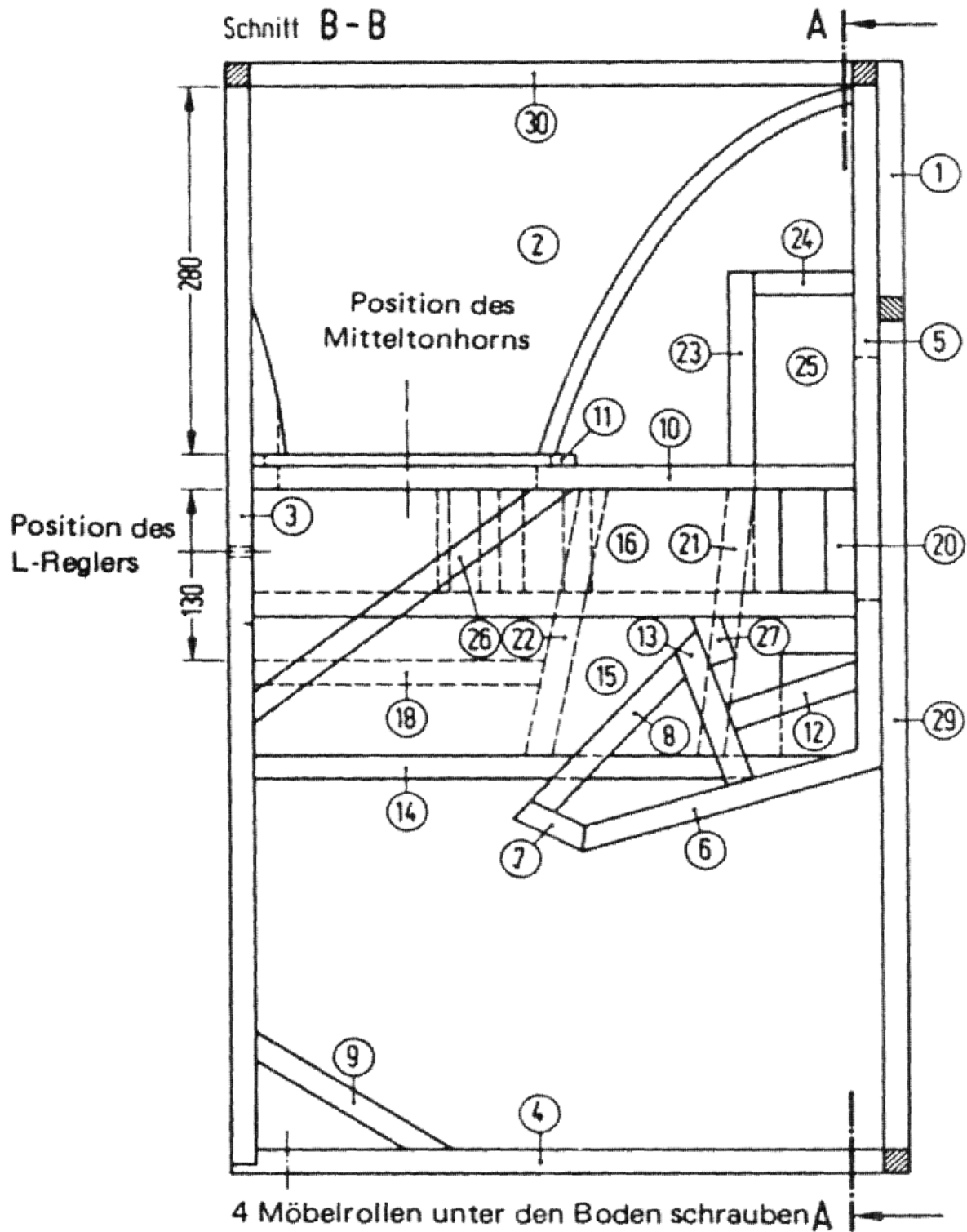
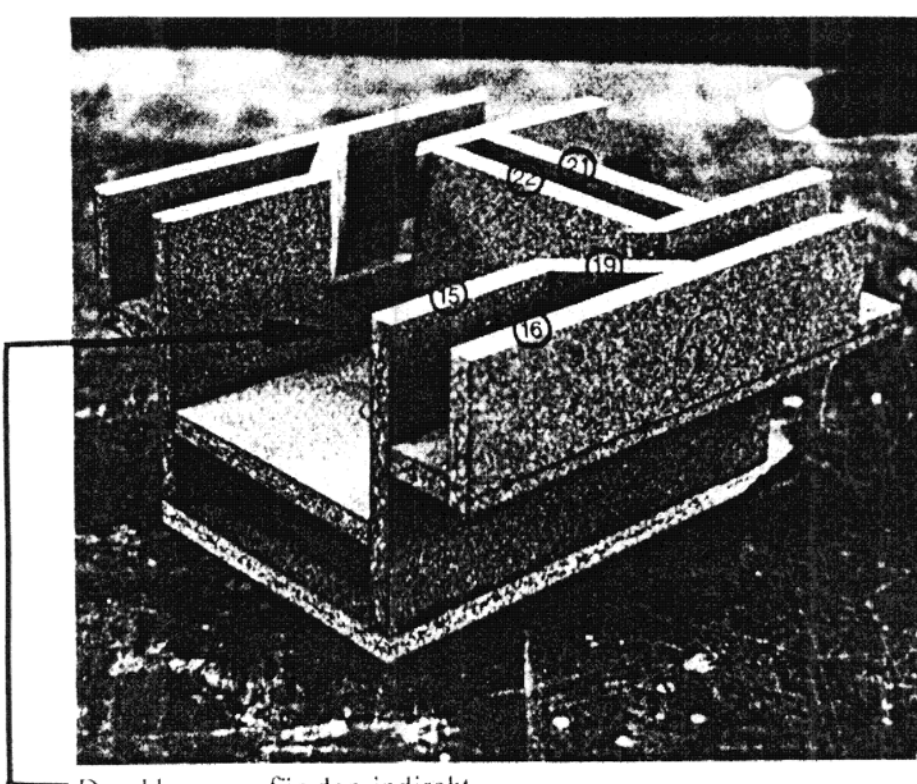


Abb. 182 Modifiziertes Lowther-Horn „Audiovector 3“ nach Gütte; Lautsprecherchassis: PM 6c oder PM 2c; Material: 19 mm dicke mitteldichte Faserplatten MDF; 8 mm dicke Sperrholzplatten; im Gegensatz zum zuvor beschriebenen Horn TP. 1 arbeiten im Horn „Audiovector 3“ zwei Lautsprecher pro Gehäuse.



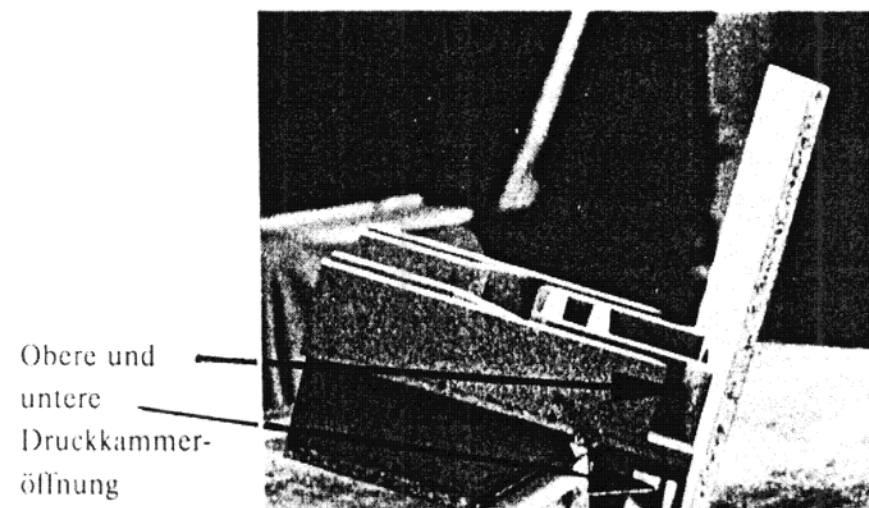
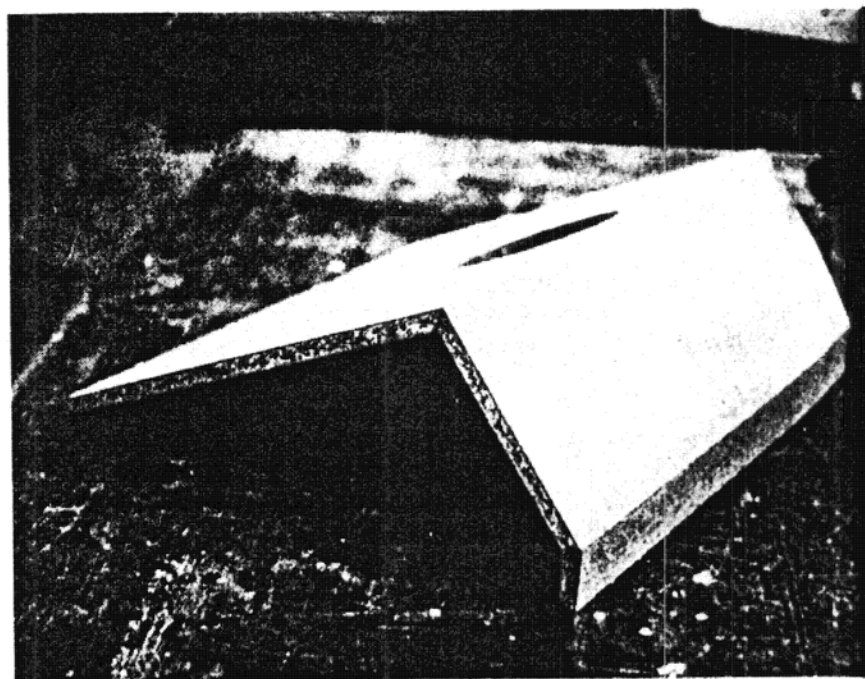
zu Abb. 182 Ein Lautsprecherchassis strahlt frontal und ein zweites Chassis strahlt indirekt und ist an seiner Membranvorderseite akustisch durch ein Mitteltonhorn belastet. Die Rückflächen beider Membranen strahlen in ein Baßhorn.

Die Bauzeichnungen und Fotos wurden von Herrn Norbert Gütte, Am Südpark 29, 4630 Bochum 6 (Tel. 023 27/7 36 72) zur Verfügung gestellt.

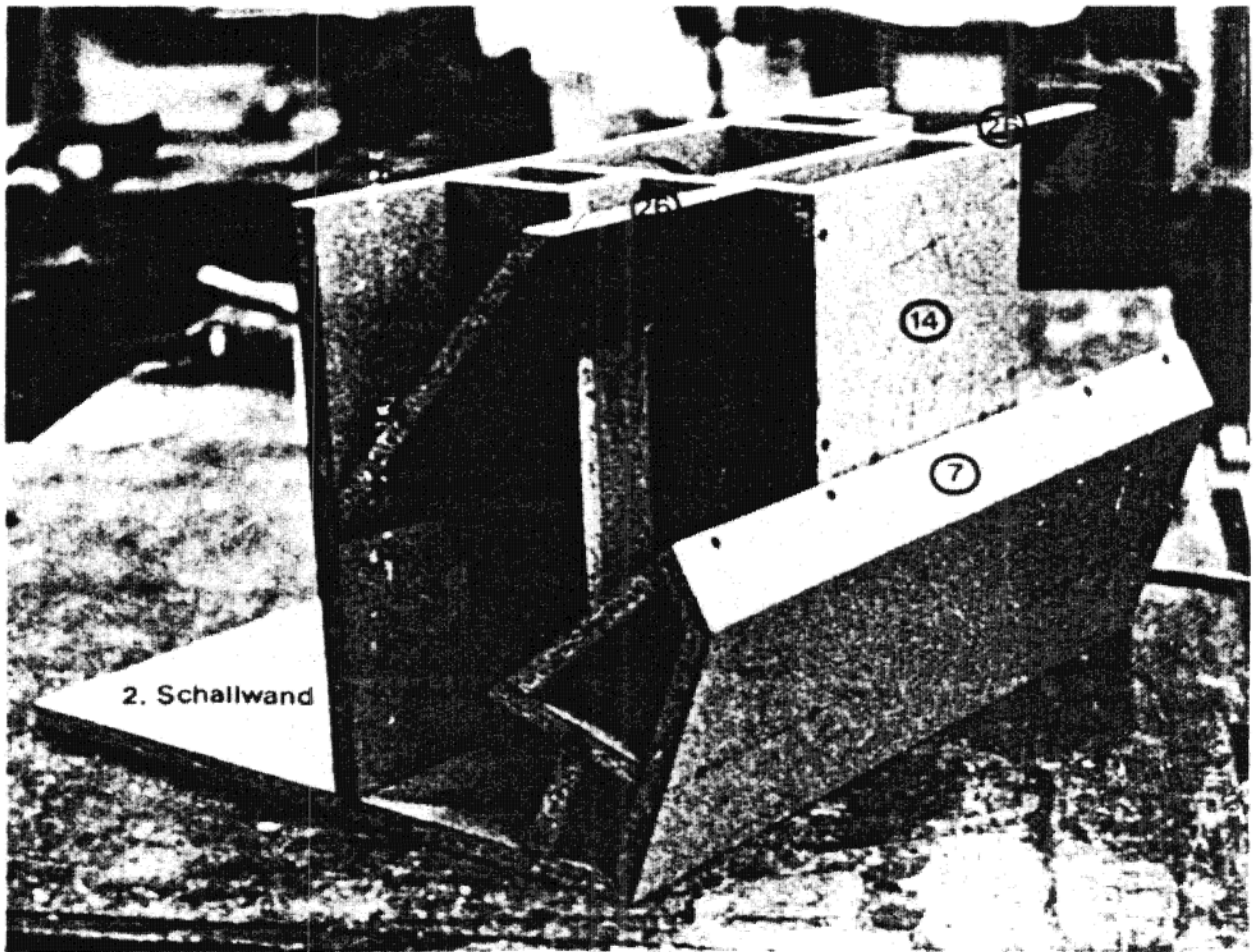


Druckkammer für den indirekt  
strahlenden Lautsprecher

zu Abb. 182

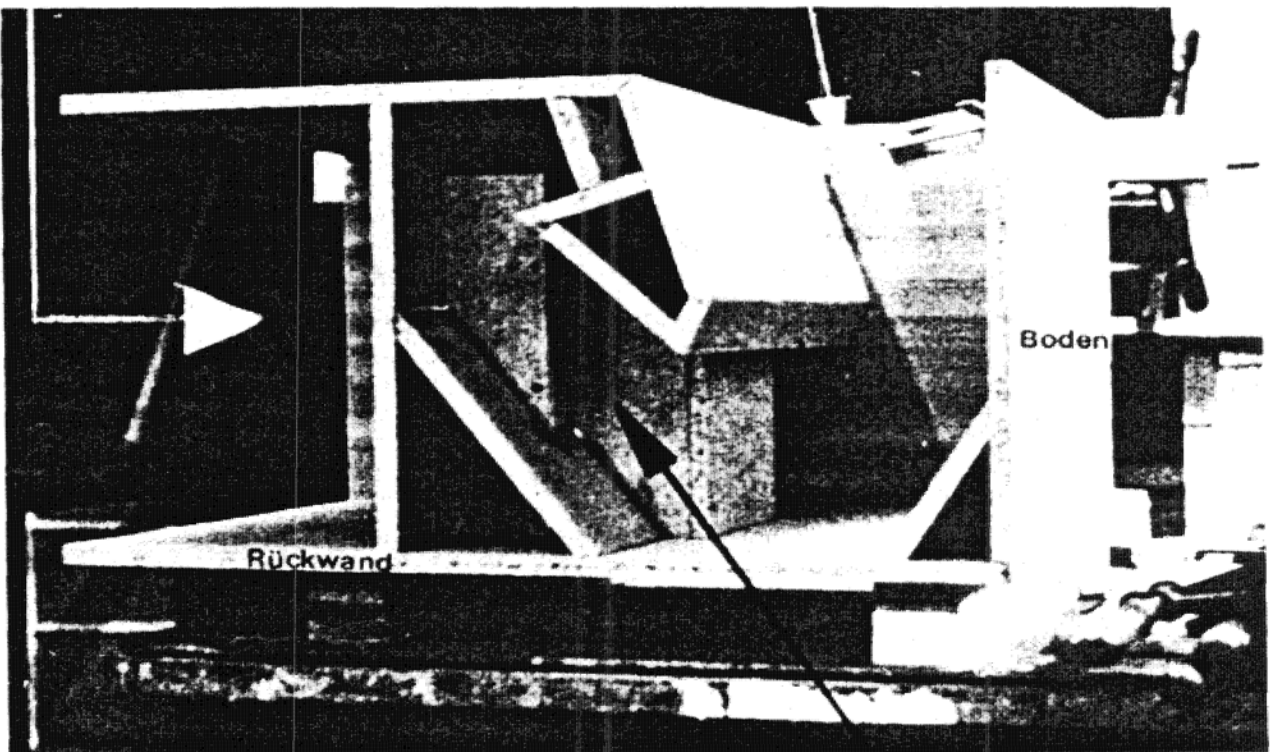


Obere und  
untere  
Druckkammer-  
öffnung



Position des  
Mitteltonhorns

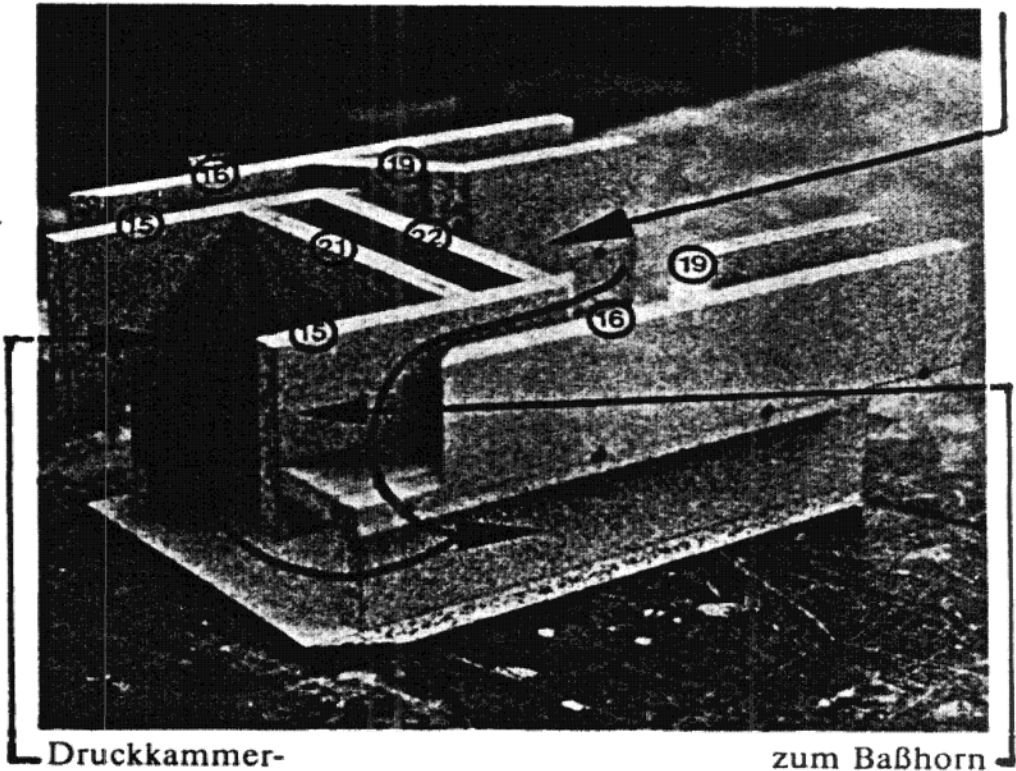
Hornwand



Druckkammergehäuse

Druckkammer  
Mitteltonhorn

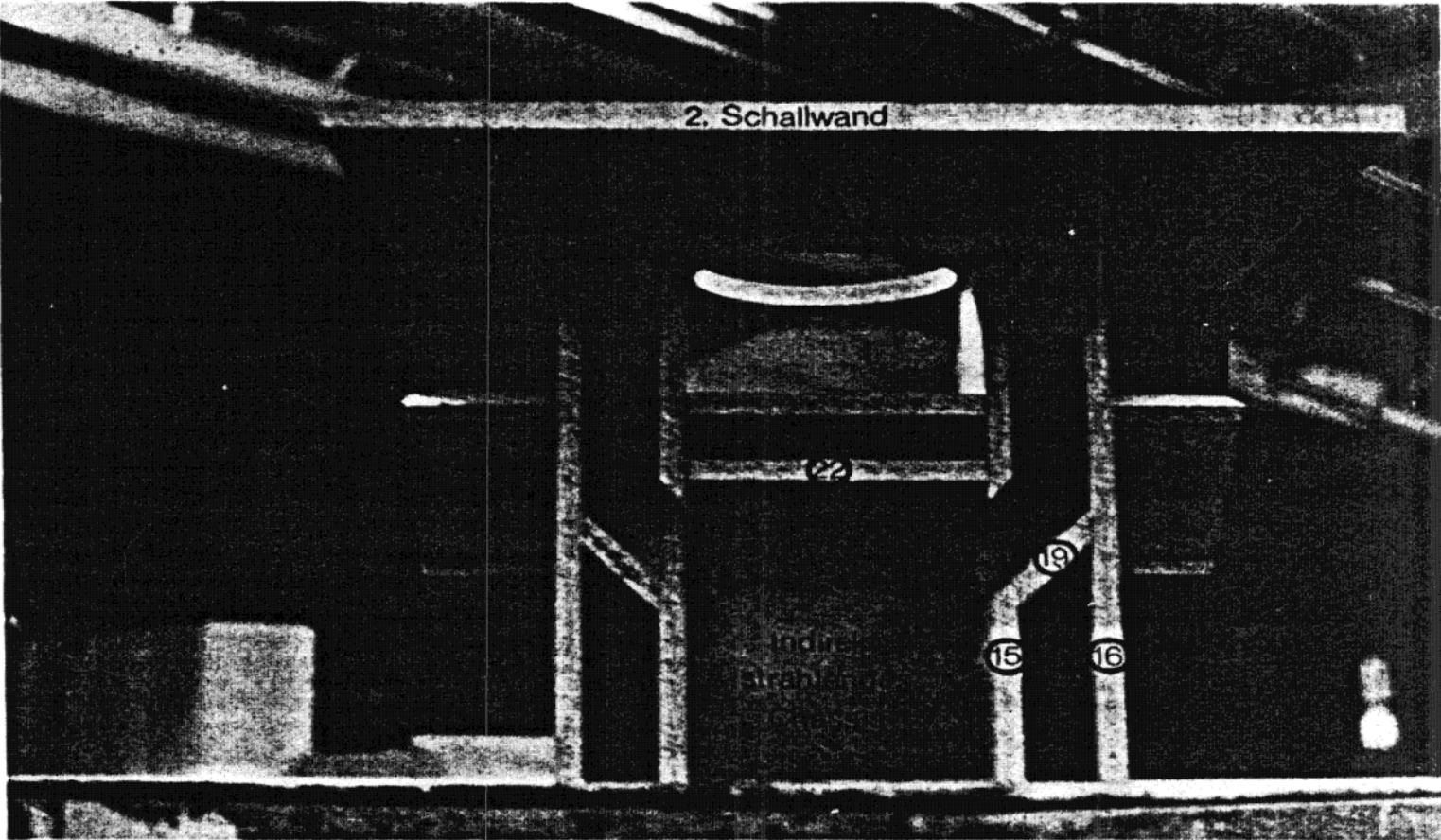
zu Abb. 182 Druck-  
kammer für Frontlaut-  
sprecher



Druckkammer-  
Frontlautsprecher

zum Baßhorn

2. Schallwand



zu Abb. 182 Aufsicht